

HONE 501 T Thermal Panels

Produce FREE hot water, heating for your home with HONE Heat panel technology. With HONE T panels you get all the benefits of FREE Heat & Hot Water, with a certified output of 912 kWhrs* of free annual energy per sqm. HONE 501 T is a breakthrough nanotechnology and is the highest certified thermal panel technology globally per sqm. HONE Heat will enable you to significantly cut your heating and hot water energy bill.

JET BLACK

912 KWHR* /YEAR

NANOTECHNOLOGY

STRONG & DURABLE

25 YEAR HONE WARRANTY



**World's most
powerful thermal
panel certified up to
912 kWhr/sqm/year***

- ~ All Black
- ~ Daylight Optimised
- ~ Marine Grade
- ~ Premium Class



*912 KWHR/sqm/year refers to the certified output 1 sqm of HONE Thermal in the UK/Ireland and such countries and can be higher in other countries.

Technical Data

Please follow the correct install design methodology by downloading the drawings and diagrams from our website.

Thermal Specifications

Model

Technology	HONE 501T (thermal)
No of tubes	14
Gross Area	1.69 m ²
Aperture	0.88 m ²
Dimensions	1608 mm x 1045 mm x 135 mm
Connections	15 mm
Weight	34.5 KG
Volume	1.92 L
Mountings	Any type: wall, ground, pitch, flat
Nominal flow rate	240 L/H
Max Op pressure	1 MPa
Max temperature	150° C
Stagnation	254.4° C.
Tilt angle	15° to 90° from horizontal
Pressure Drop	At flow rate 3.0 L/min ≤ 26.6 mBar
Angle of Tilt	0° to 90° from horizontal
Max recommended continuous wind load	80 mph (36 m/s)
Permissible snow load	500 mm (see page 23)
NOa	0.75
A1	2.368
A2	0.000
IAM	1.13

System Description

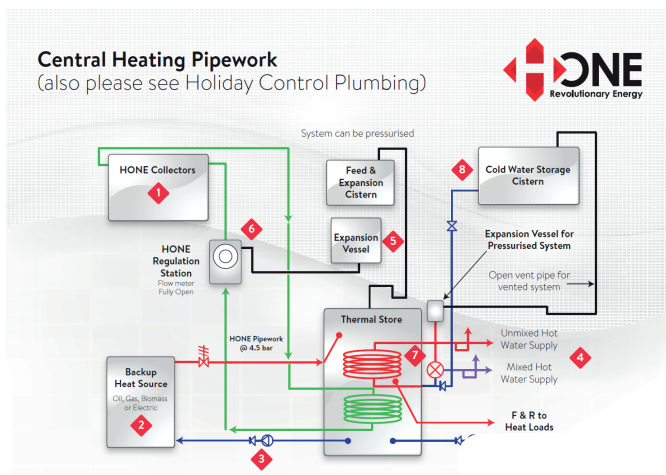
Figure 1. A typical installation of the HONE System.

The HONE Array heats up to a specific set-point temperature which switches on the activation pump for 30 secs. Once the Array has been activated, the system goes into production. The HONE system is fully automatic and has both electronic and mechanical safety features.

Only approved HONE cylinders and control/pump stations can be used with the HONE 501 due to its high performance. These will be supplied as part of the equipment package.

The optimum energy storage size is 300 L for all domestic buildings.

Figure 1.



The HONE system operates with a microcomputer which monitors so you just sit back and let it look after your HONE system 24 hours a day.



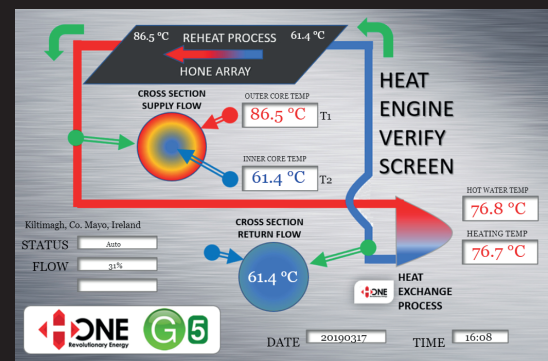
Keymark Licence Number: 011-752523 R

HONE thermal collectors come with a plumbing kit and pitched roof mounting kit as standard. The HONE modules are manufactured to a 50 year design life and these additional components are required for installation.

HONE thermal collectors are high performance units and only the supplied equipment and fluids should be used.

HONE thermal collectors uniquely come in one unit from the factory, no assembly required. Just remove from the box and install.

All HONE systems come with real-time monitoring once you have an internet service.



HONE systems are fuelled by daylight and systems should only be installed by approved installers.



Photonomi Global Group a.r.l.
Level 33,
25 Canada Square,
Canary Wharf,
London,
United Kingdom,
E14 5LQ.

web: www.honeworld.com
email: sales@honeworld.com