

HONE 501 TE Thermal Electric Panels

Produce FREE hot water, heating and electricity for your home with HONE Heat and Power panel technology. With HONE TE panels, you get the benefits of FREE Heat and POWER, with a certified output of 1 MWhr* of FREE annual energy per sqm. HONE 501 TE is a breakthrough nanotechnology and is the highest certified panel technology globally per sqm. HONE Heat and Power will slow or stop your electricity meter and enable you to significantly cut your heating & hot water energy bill.

JET BLACK

1 MWhr* / YEAR

NANOTECHNOLOGY

STRONG & DURABLE

25 YEAR HONE WARRANTY



**World's most
powerful dual energy
panel certified to
1 MWhr/sqm/year***

- ~ All Black
- ~ Daylight Optimised
- ~ Marine Grade
- ~ Premium Class



Technical Data

Please follow the correct install design methodology by downloading the drawings and diagrams from our website.

Thermal Specifications

Model

Technology	HONE 501TE (thermal)
No of tubes	14
Gross Area	1.69 m ²
Aperture	0.88 m ²
Dimensions	1608 mm x 1045 mm x 135 mm
Connections	15 mm
Weight	34.5 KG
Volume	1.92 L
Mountings	Any type: wall, ground, pitch, flat
Nominal flow rate	240 L/H
Max Op pressure	1 MPa
Max temperature	150° C
Stagnation	254.4° C.
Tilt angle	15° to 90 ° from horizontal
Pressure Drop	At flow rate 3.0 L/min ≤ 26.6 mBar
Angle of Tilt	0° to 90° from horizontal
Max recommended continuous wind load	80 mph (36 m/s)
Permissible snow load	500 mm (see page 23)
NOa	0.75
A1	2.368
A2	0.000
IAM	1.13

Electrical Specifications

Model

Maximum Power (Pmax)	90W _p (0/+3%)
Maximum Power Voltage (Vmp)	24.4V
Maximum Power Current (Imp)	8.20A
Open Circuit Voltage (Voc)	30.4V
Short Circuit Current (Isc)	8.77A
Nominal Operating Cell Temperature(NOCT)	45+/-2C
Maximum System Voltage	1000VDC
Maximum Series Fuse	15A
Fire Safety Class	Class C
Weight	12KG
Dimensions	1342 x 992 x 40 mm
Module Application	Class A

Assembly

HONE Thermal Electric panels come in two parts, the fully assembled thermal unit plus the electrical unit. Prior to installation, these 2 units slot together with a small bolt kit and form the Thermal Electric panel.

HONE TE panels have the highest certified performance ratings of any panel technology. A fully aluminium marine grade product with aluminium pitched roof mounting kit supplied in the box included along with a high pressure plumbing kit.

The HONE system operates with a microcomputer which monitors so you just sit back and let it look after your HONE system 24 hours a day.



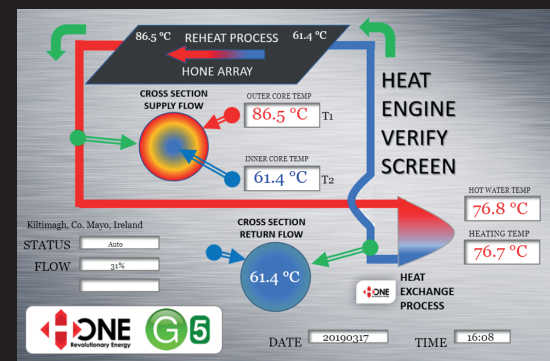
Keymark Licence Number: 011-752523 R

HONE thermal electric panels come with a plumbing kit and pitched roof mounting kit as standard. The HONE modules are manufactured to a 50 year design life and these additional components are required for installation.

HONE thermal electric panels are high performance units and only the supplied equipment and fluids should be used.

HONE thermal electric panels uniquely come in two units from the factory, minor assembly required. Just remove from the boxes, bolt together and install.

All HONE systems come with real-time monitoring once you have an internet service.



HONE systems are fuelled by daylight and systems should only be installed by approved installers.



Photonomi Global Group a.r.l.
Level 33,
25 Canada Square,
Canary Wharf,
London,
United Kingdom,
E14 5LQ.

web: www.honeworld.com
email: sales@honeworld.com